

AN ORDINANCE OF THE VILLAGE OF BELLEVUE,
PEORIA COUNTY, ILLINOIS

BE IT ORDAINED, by the President and the Board of Trustees
of the Village of Bellevue, Peoria County, Illinois:

SECTION I. Pursuant to the provisions of Chapter 27,
Section 7-1-8, Illinois Revised Statutes, 1965, the following
described real property is hereby annexed to the Village of
Bellevue, Peoria County, Illinois:

Lots One (1) and Two (2) in FERNWOOD THIRD
ADDITION, being a Subdivision of part of the
South Half (S 1/2) of the Southeast Quarter
(SE 1/4) of the Northeast Quarter (NE 1/4)
of Section Ten (10), Township Eight (8) North,
Range Seven (7) East of the Fourth Principal
Meridian; situated, lying and being in the
County of Peoria and State of Illinois.

SECTION II. The above-described real property shall be
designated " Commercial District" in the permanent zoning
ordinance of the Village of Bellevue.

SECTION III. That the Ordinance be in full force and effect
after its passage and due recording as required by law.

PASSED by the Board of Trustees of the Village of Bellevue,
Peoria County, Illinois; approved by its President and attested
by its Clerk this 10 day of May, 1966.

President

ATTEST:

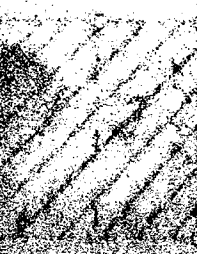
Clerk

*where Five Lini used eas
are sold at
corner of Plank Rd +
N. Bellevue #173*

22
21
20
19
18
17
16
15
14

13
12
11
10
9
8
7
6

W
E
S
T
E
R
N
D
I
S
T
R
I
C
T



U.S. Route No. 104

#73