

ORDINANCE NO. 295

AN ORDINANCE ANNEXING CERTAIN TERRITORY TO THE  
VILLAGE OF BELLEVUE, PEORIA COUNTY, ILLINOIS

WHEREAS, certain territory which is less than sixty (60) acres in size is presently unincorporated and is totally surrounded by the corporate limits of the Village of Bellevue; and

WHEREAS, said territory is not within the corporate limits of any other municipality; and

WHEREAS, Chapter 24, Section 7-1-13 of the Illinois Revised Statutes permits the annexation of property to a municipality wherein that property is totally surrounded by the corporate limits of the municipality; and,

WHEREAS, a legal notice regarding the intention of the Village to annex said territory was duly published in the Peoria Journal Star on March 15, 1985; and,

WHEREAS, all of the necessary legal requirements have been fully complied with; and

WHEREAS, it is in the best interests of the Village of Bellevue that said territory be annexed thereto,

NOW, THEREFORE, BE IT ORDAINED BY THE PRESIDENT AND BOARD OF TRUSTEES OF THE VILLAGE OF BELLEVUE, PEORIA COUNTY, ILLINOIS, AS FOLLOWS:

Section 1: That pursuant to Chapter 24, Section 7-1-13 of the Illinois Revised Statutes, the following described territory:

A part of the SE 1/4 of Section 10, T-8-N, R-7-E of the 4th P.M., Peoria County, Illinois, more particularly described as follows:

Commencing at the center of said Section 10; thence South along the West line of the SE 1/4 of said Section 10, a distance of 66.92 feet to the South right-of-way line of S.B.I. Route 8 (Illinois Route 116); thence N 89° 41' E along said right-of-way line, a distance of 575 feet to the Place of Beginning of the tract being described; thence South, a distance of 220 feet; thence S 62° 36' E, a distance of 538 feet; thence S 89° 53' E, a distance of 255 feet to the West line of Bellevue Acres 1st Addition; thence North along the West line of Bellevue Acres 1st Addition, a distance of 120 feet to the South line of

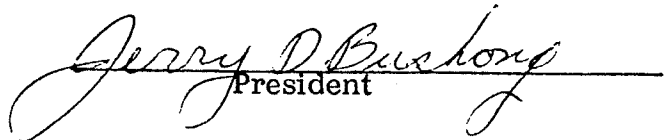
Kenrick's Addition to Bellevue Acres; thence West along the South line of Kenrick's Addition to Bellevue Acres, a distance of 33.7 feet; thence North along the West line of Kenrick's Addition to Bellevue Acres a distance of 351.1 feet to the South right-of-way line of S.B.I. Route 8 (Illinois Route 116); thence S 89° 41' W along said right-of-way line a distance of 696.5 feet to the Place of Beginning, containing 5.5 Acres, more or less.

being indicated on an accurate map of the annexed territory, (which is appended to and made a part of this Ordinance) is hereby annexed to the Village of Bellevue, Peoria County, Illinois.

Section 2: That the Village Clerk is hereby directed to record with the Recorder of Deeds and to file with the County Clerk a certified copy of this Ordinance, together with the accurate map of the territory annexed appended to said Ordinance.

Section 3: That this Ordinance shall be in full force and effect from and after its passage, approval and publication in pamphlet form as provided by law.

PASSED AND APPROVED this 26 day of March, 1985.

  
President

ATTEST:

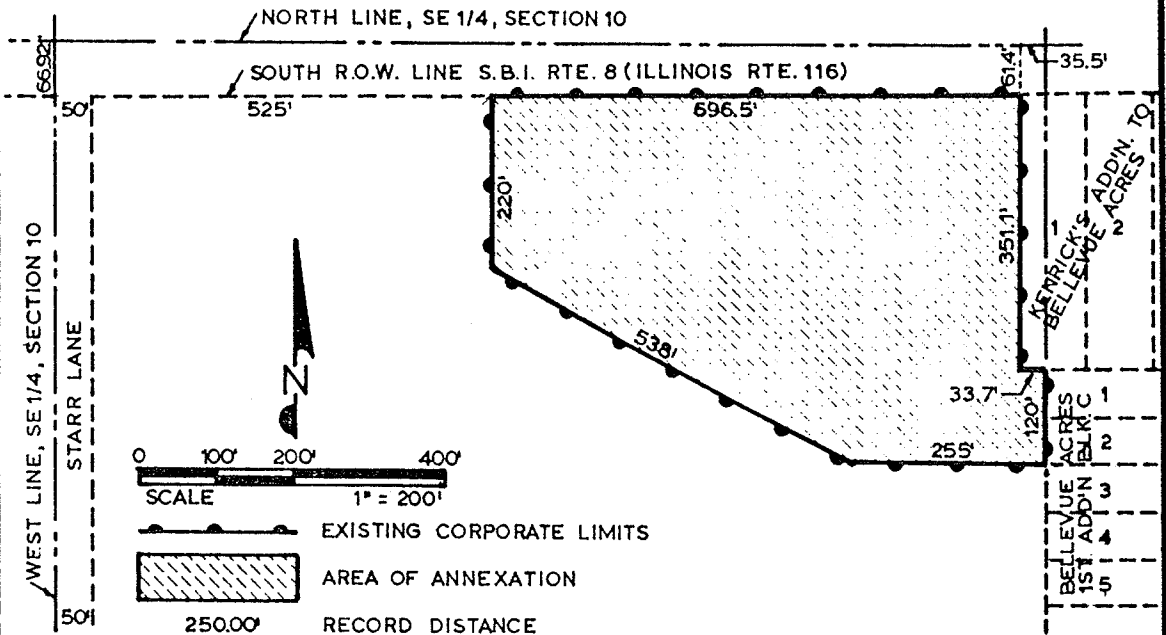
  
Village Clerk

Ayes: 6

Nays: 0

Absent: 0

PLAT OF ANNEXATION TO VILLAGE OF BELLEVUE  
 BEING A PART OF THE SE 1/4 OF SECTION 10,  
 T.8N., R.7E. OF THE 4TH P.M., PEORIA COUNTY, ILLINOIS



State of Illinois )  
 County of Peoria ) SS

We, the ASSOCIATED ENGINEERS III, INC., do hereby certify that we have prepared an Annexation Plat of a part of the SE 1/4 of Sec. 10, T-8-N, R-7-E of the 4th P.M., Peoria County, Illinois, and that the above plat is a true and correct representation of said annexation as drawn to a scale of 1 inch equals 200 feet.

Dated this 16th Day of January, A.D., 1935.

ASSOCIATED ENGINEERS III, INC.

by: *David B. Clouse*  
 Illinois Reg. Land Surveyor 2448



#295

CERTIFICATE OF CLERK

LARRY HOWARD, Clerk of the Village of Bellevue, hereby certifies that the foregoing is a true and correct copy of an Ordinance duly passed by the Board of Trustees of the Village of Bellevue at a regular session of said Board of Trustees on March 26, 1985, annexing the property therein described to the Village of Bellevue.

A handwritten signature in cursive script, reading "Larry Howard", is written over a solid horizontal line.

Larry Howard

(SEAL)

---

This document prepared by Jack B. Teplitz, 1125 Peoria Savings Plaza, Peoria, IL 61602.

#295