

ORDINANCE NO. 296

AN ORDINANCE ANNEXING CERTAIN TERRITORY TO THE
VILLAGE OF BELLEVUE, PEORIA COUNTY, ILLINOIS

WHEREAS, certain territory which is less than sixty (60) acres in size is presently unincorporated and is totally surrounded by the corporate limits of the Village of Bellevue; and

WHEREAS, said territory is not within the corporate limits of any other municipality; and

WHEREAS, Chapter 24, Section 7-1-13 of the Illinois Revised Statutes permits the annexation of property to a municipality wherein that property is totally surrounded by the corporate limits of the municipality; and,

WHEREAS, a legal notice regarding the intention of the Village to annex said territory was duly published in the Peoria Journal Star on March 15, 1985; and,

WHEREAS, all of the necessary legal requirements have been fully complied with; and

WHEREAS, it is in the best interests of the Village of Bellevue that said territory be annexed thereto,

NOW, THEREFORE, BE IT ORDAINED BY THE PRESIDENT AND BOARD OF TRUSTEES OF THE VILLAGE OF BELLEVUE, PEORIA COUNTY, ILLINOIS, AS FOLLOWS:

Section 1: That pursuant to Chapter 24, Section 7-1-13 of the Illinois Revised Statutes, the following described territory:

A part of the SW 1/4 of Section 10, T-8-N, R-7-E of the 4th P.M., Peoria County, Illinois, more particularly described as follows:

Commencing at the center of said Section 10; thence S 0° 23' 45" W along the East line of the SW 1/4 of said Section 10, a distance of 66.92 feet to the Place of Beginning of the tract to be described; thence continuing S 0° 23' 45" W along the East line of the SW 1/3 of said Section 10, a distance of 250.00 feet; thence N 89° 52' 40" W, a distance of 200.00 feet; thence N 0° 23' 45" E, a distance of 250.00 feet to the South right-of-way line of S.B.I. Route 8 (Illinois Route 116); thence S 89° 52' 40" E along the South right-of-way line of S.B.I. Route 8 (Illinois Route 116), a distance of 200.00 feet to the Place of Beginning, containing 1.148 Acres more or less.

being indicated on an accurate map of the annexed territory, (which is appended to and made a part of this Ordinance) is hereby annexed to the Village of Bellevue, Peoria County, Illinois.

Section 2: That the Village Clerk is hereby directed to record with the Recorder of Deeds and to file with the County Clerk a certified copy of this Ordinance, together with the accurate map of the territory annexed appended to said Ordinance.

Section 3: That this Ordinance shall be in full force and effect from and after its passage, approval and publication in pamphlet form as provided by law.

PASSED AND APPROVED this 26 day of March, 1985.

Jerry D Bushong
President

ATTEST:

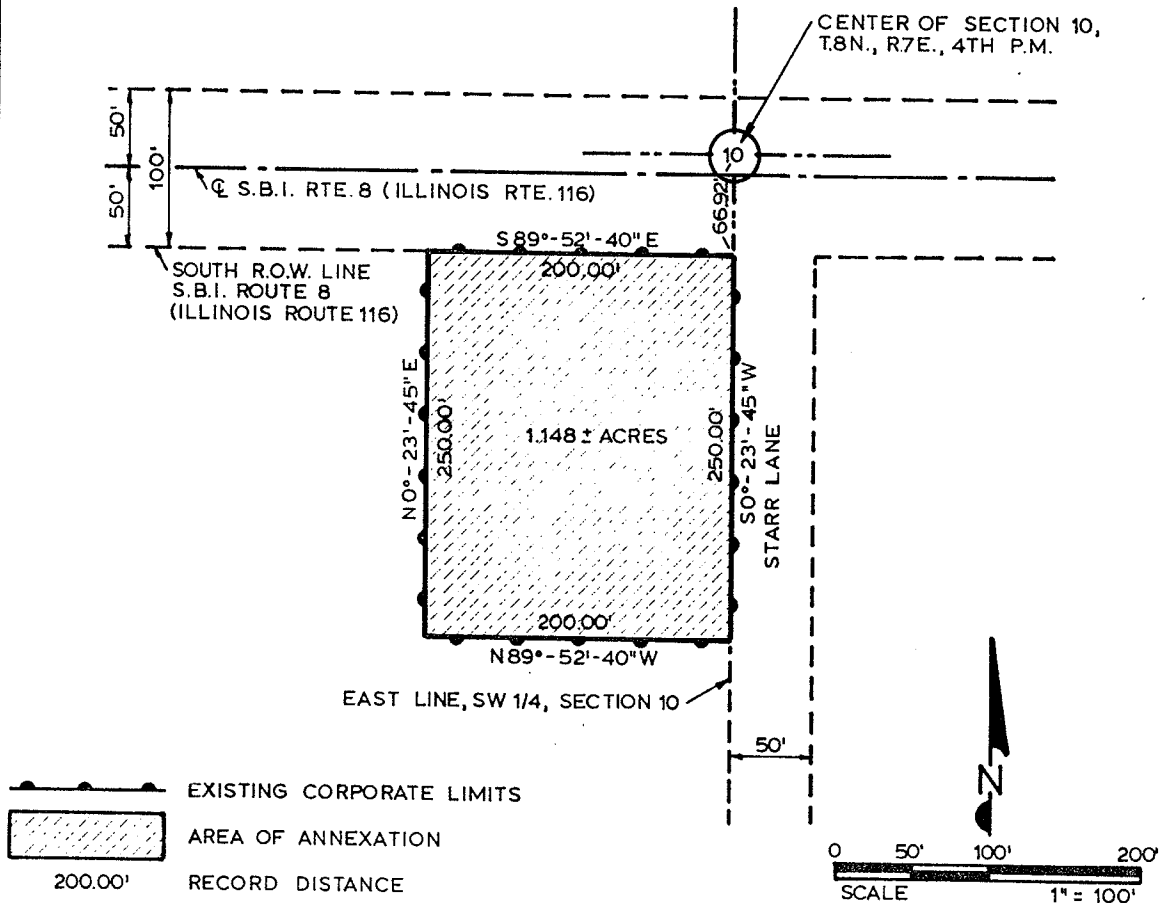
Larry D Howard
Village Clerk

Ayes: 6

Nays: 0

Absent:

PLAT OF ANNEXATION TO VILLAGE OF BELLEVUE
 BEING A PART OF THE SW 1/4 OF SECTION 10,
 T.8N., R.7E. OF THE 4TH P.M., PEORIA COUNTY, ILLINOIS



State of Illinois)
 County of Peoria) SS

We, the ASSOCIATED ENGINEERS III, INC., do hereby certify that we have prepared an Annexation Plat of a part of the SW 1/4 of Section 10, T-8-N, R-7-E of the 4th P.M., Peoria County, Illinois and that the above plat is a true and correct representation of said annexation as drawn to a scale of 1 inch equals 100 feet.

Dated this 16th Day of January, A.D., 1985.

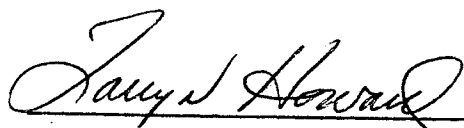
ASSOCIATED ENGINEERS III, INC.

by: *David B. Clouser*
 Illinois Reg. Land Surveyor 2448



CERTIFICATE OF CLERK

LARRY HOWARD, Clerk of the Village of Bellevue, hereby certifies that the foregoing is a true and correct copy of an Ordinance duly passed by the Board of Trustees of the Village of Bellevue at a regular session of said Board of Trustees on March 26, 1985, annexing the property therein described to the Village of Bellevue.



Larry Howard

(SEAL)

This document prepared by Jack B. Teplitz, 1125 Peoria Savings Plaza, Peoria, IL 61602.

296