

AUG 12 1987

STATE OF ILLINOIS } ss filed for record  
County of Peoria } in the office of  
HELEN G. BLAIR, County Recorder on  
10 A.M.  
Helen G. Blair  
Recorder of Deeds

VILLAGE OF BELLEVUE, ILLINOIS

Ordinance No. 311

AN ORDINANCE ANNEXING CERTAIN TERRITORY  
TO THE VILLAGE OF BELLEVUE,  
PEORIA COUNTY, ILLINOIS

WHEREAS, certain territory dedicated for highway purposes is contiguous to the corporate limits of the Village of Bellevue; and

WHEREAS, said territory is not within the corporate limits of any other municipality; and

WHEREAS, Chapter 24, Section 7-1-10 of the Illinois Revised Statutes permits the annexation of property to a municipality wherein that property is dedicated for highway purposes and is contiguous to the corporate limits of the municipality; and,

WHEREAS, all of the necessary legal requirements have been fully complied with; and

WHEREAS, it is in the best interest of the Village of Bellevue that said territory be annexed thereto,

NOW, THEREFORE, BE IT ORDAINED BY THE PRESIDENT AND BOARD OF TRUSTEES OF THE VILLAGE OF BELLEVUE, PEORIA COUNTY, ILLINOIS, AS FOLLOWS:

Section 1. That pursuant to Chapter 24, Section 7-1-10 of the Illinois Revised Statutes, the territory being indicated on an accurate map of the annexed territory, (which is appended to and made a part of this Ordinance) is hereby annexed to the Village of Bellevue, Peoria County, Illinois.

Section 2. That the Village Clerk is hereby directed to record with the Recorder of Deeds and to file with the County Clerk a certified copy of this Ordinance, together with the accurate map of the territory annexed appended to said Ordinance.

Section 3. That this Ordinance shall be in full force effect from and after its passage, approval and publication pamphlet form as provided by law.

PASSED AND APPROVED THIS 11th day of August, 1987.

*Jerry D Bush*  
Mayor

ATTEST:

THIS INSTRUMENT WAS PREPARED BY \_\_\_\_\_

*Brenda S Bushong*  
Village Clerk

Ayes: 6

Nays: 0

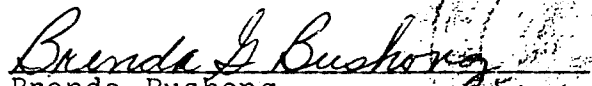
Absent: 1

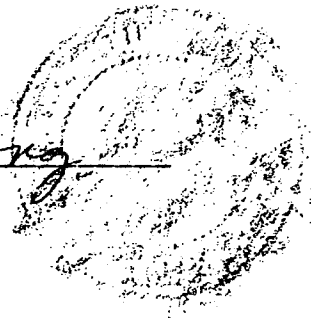
87-17868

VILLAGE OF BELLEVUE, ILLINOIS

CERTIFICATE OF ANNEXATION

I, Brenda Bushong, Clerk of the Village of Bellevue, Illinois, hereby certifies that the Village of Bellvue has by Ordinance, a true and correct copy of which is attached hereto, on August 11, 1987, at a regular session of the Village Board of Trustees annexed the property described in said Ordinance to the Village of Bellevue, Illinois.

  
Brenda Bushong  
Village Clerk

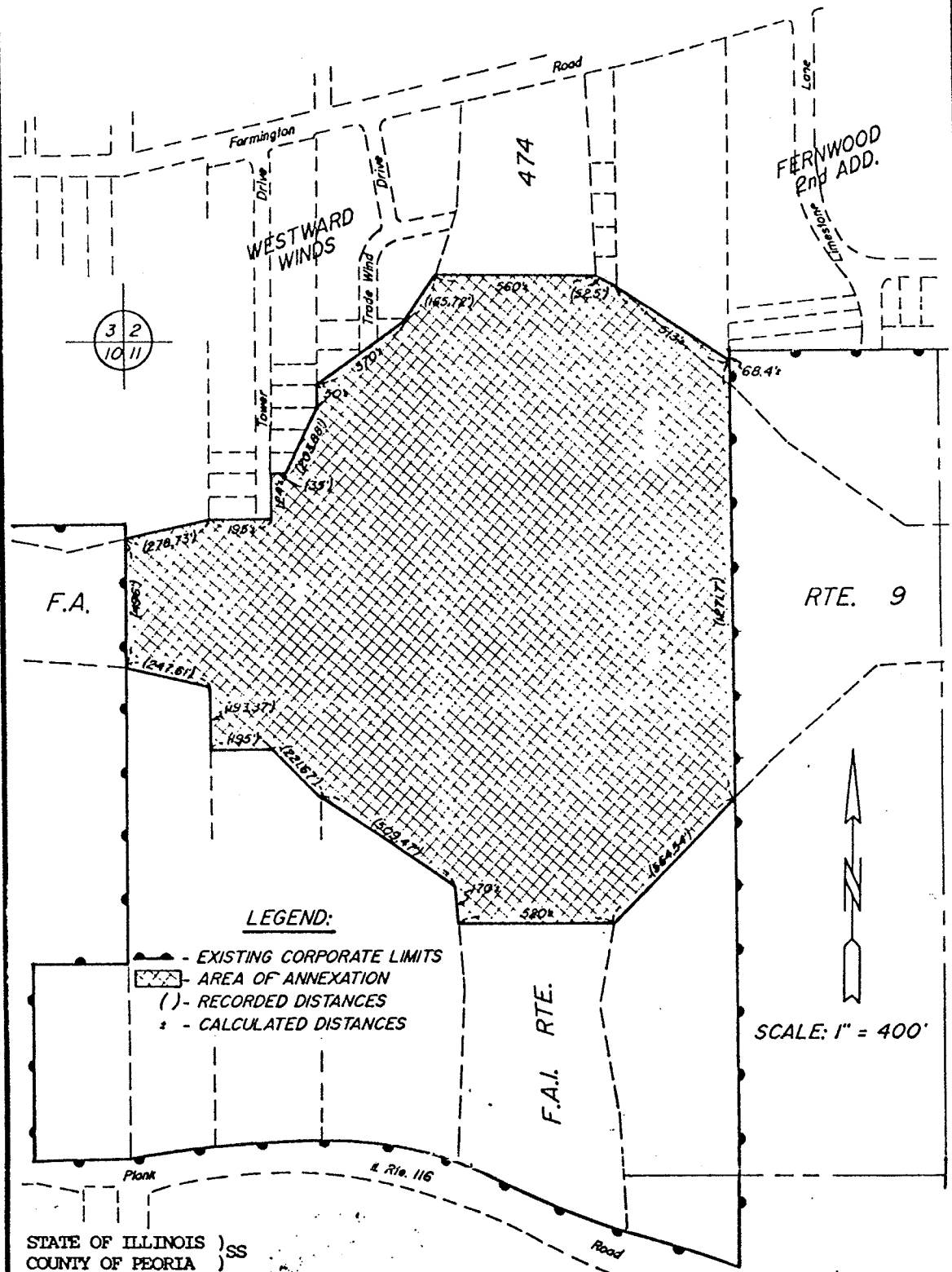


87-17868

#311A

# PLAT OF ANNEXATION TO VILLAGE OF BELLEVUE

BEING A PART OF THE SW 1/4 OF SECTION 2, AND A PART OF THE NW 1/4 OF SECTION 11, T8N, R7E OF THE 4TH P.M., PEORIA COUNTY, ILLINOIS



STATE OF ILLINOIS )  
 COUNTY OF PEORIA )

WE, THE CLARK ENGINEERS MW, INC., DO HEREBY CERTIFY THAT WE HAVE PREPARED AN ANNEXATION PLAT OF A PART OF THE SW 1/4 OF SECTION 2, AND A PART OF THE NW 1/4 OF SECTION 11, T8N, R7E OF THE 4TH P.M., PEORIA COUNTY, ILLINOIS AND THAT THE ABOVE PLAT IS A TRUE AND CORRECT REPRESENTATION OF SAID ANNEXATION AS DRAWN TO A SCALE OF ONE INCH EQUALS 400 FEET.

DATED THIS 27TH DAY OF JULY, 1987

87-17868

by: John S. Henderson  
 Illinois Registered Land Surveyor #2749

ILLINOIS  
 #311A