

VILLAGE OF BELLEVUE, ILLINOIS

CERTIFICATE OF ANNEXATION

I, Brenda Bushong, Clerk of the Village of Bellevue, Illinois, hereby certifies that the Village of Bellevue has by Ordinance, a true and correct copy of which is attached hereto, on August 25, 1987, at a regular session of the Village Board of Trustees annexed the property described in said Ordinance to the Village of Bellevue, Illinois.


Brenda Bushong
Village Clerk

FILED

AUG 26 1987

MARY E. HARKRADER
COUNTY CLERK

#313

VILLAGE OF BELLEVUE, ILLINOIS

ORDINANCE NO. 313

AN ORDINANCE ANNEXING CERTAIN TERRITORY
TO THE VILLAGE OF BELLEVUE,
PEORIA COUNTY, ILLINOIS
(THE WILLIAMS PROPERTY)

WHEREAS, a written petition, signed by the legal owners of record of all land within the territory hereinafter described and by all the electors residing thereon, has been filed with the Village Clerk of the Village of Bellevue, Peoria County, Illinois, requesting that said territory be annexed to the Village of Bellevue; and,

WHEREAS, the said territory is not within the corporate limits of any municipality, but is contiguous to the Village of Bellevue; and,

WHEREAS, no legal notices regarding the intention of the Village of Bellevue are required by state statute; and

WHEREAS, all petitions, documents, and other necessary legal requirements are in full compliance with the terms of said annexation agreement and with the statutes of the State of Illinois, specifically Chapter 24, paragraph 7-1-8, Illinois Revised Statutes, 1971; and,

WHEREAS, it is in the best interests of the Village of Bellevue that said territory be annexed thereto,

NOW, THEREFORE, BE IT ORDAINED BY THE PRESIDENT AND BOARD OF TRUSTEES OF THE VILLAGE OF BELLEVUE, PEORIA COUNTY, ILLINOIS AS FOLLOWS:

Section 1: THAT the territory described on the plat attached hereto and made a part hereof is hereby annexed to the Village of Bellevue, Peoria County, Illinois.

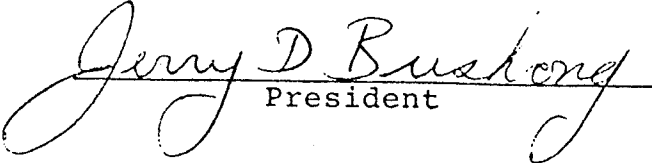
Section 2: THAT the Village Clerk is hereby directed to record with the Recorder of Deeds and to file with the County Clerk a certified copy of this Ordinance, together

#313


with the accurate map of the territory annexed appended to said Ordinance.

Section 3: THAT this Ordinance shall be in full force and effect from and that its passage, approval, and publication in pamphlet form as provided by law.

PASSED AND APPROVED THIS 25th day of August, 1987.


President

ATTEST:

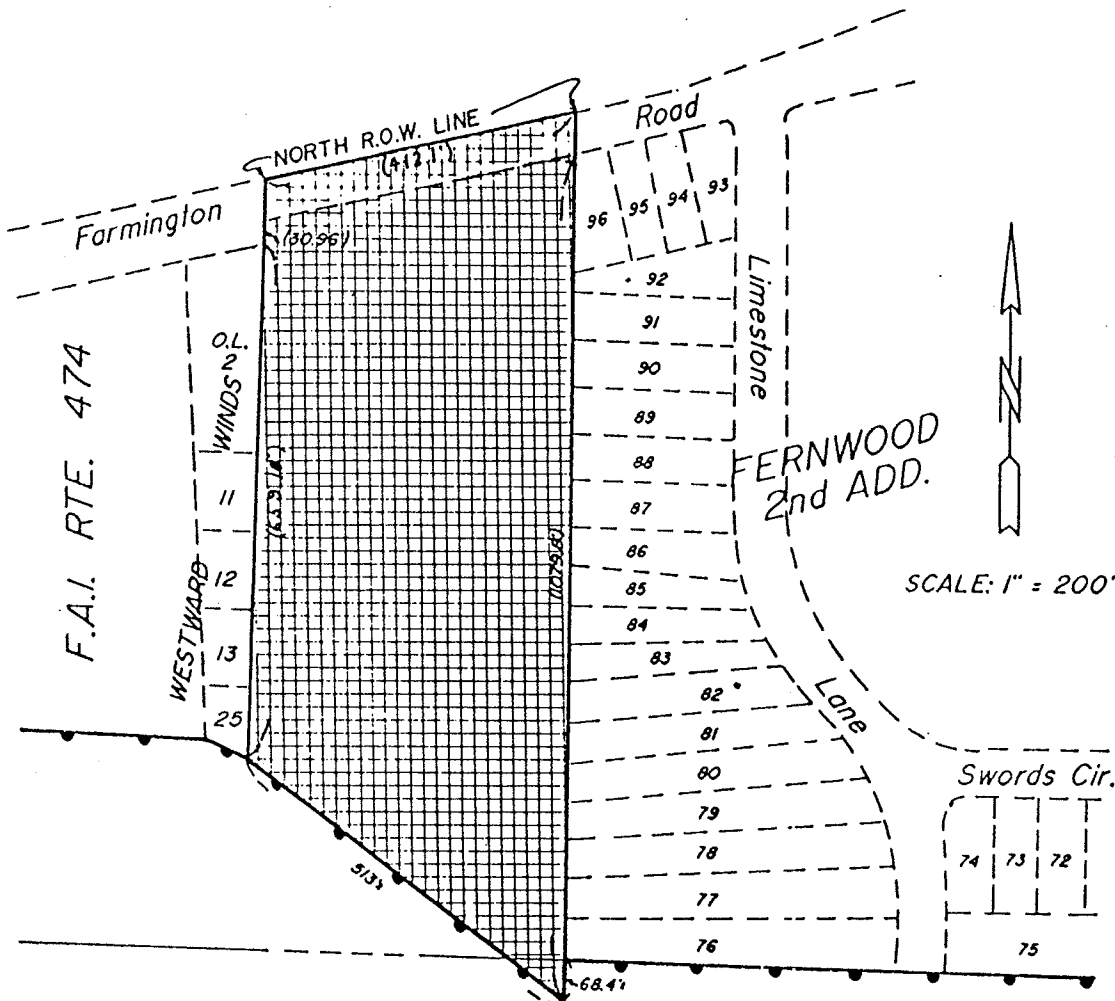

Village Clerk

Ayes: 4
Nays: 0
Absent: 3

#313

PLAT OF ANNEXATION TO VILLAGE OF BELLEVUE

BEING A PART OF THE SW 1/4 OF SECTION 2, AND A PART OF THE NW 1/4 OF SECTION 11, T8N, R7E OF THE 4TH P.M., PEORIA COUNTY, ILLINOIS



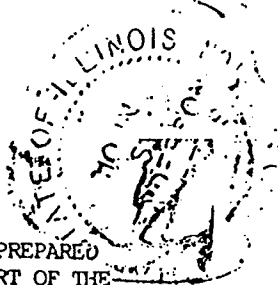
- LEGEND:**
- - EXISTING CORPORATE LIMITS
 - ▨ - AREA OF ANNEXATION
 - () - RECORDED DISTANCES
 - - CALCULATED DISTANCES

STATE OF ILLINOIS)
 COUNTY OF PEORIA)^{SS}

WE, THE CLARK ENGINEERS MW, INC., DO HEREBY CERTIFY THAT WE HAVE PREPARED AN ANNEXATION PLAT OF A PART OF THE SW 1/4 OF SECTION 2, AND A PART OF THE NW 1/4 OF SECTION 11, T8N, R7E OF THE 4TH P.M., PEORIA COUNTY, ILLINOIS, AND THAT THE ABOVE PLAT IS A TRUE AND CORRECT REPRESENTATION OF SAID ANNEXATION AS DRAWN TO A SCALE OF ONE INCH EQUALS 200 FEET.

DATED THIS 3RD DAY OF AUGUST, 1987

BY: John L. Henderson
 ILLINOIS REGISTERED LAND SURVEYOR #2749



M 5618.00