

ORDINANCE NO. 379

AN ORDINANCE PROVIDING FOR ANNEXATION OF CERTAIN TERRITORY  
TO THE VILLAGE OF BELLEVUE, ILLINOIS

WHEREAS, the tracts of land described on Exhibit A attached hereto and made a part hereof are contiguous to the Village of Bellevue, are wholly bounded by the Village, are not within the corporate limits of any municipality and are less than 60 acres; and

WHEREAS, pursuant to Section 7-1-13 of the Illinois Municipal Code (Ill.Rev.Stat. 1991, ch. 24, §7-1-13), surrounded territory may be annexed by the municipality which surrounds the territory; and

WHEREAS, the Village Board of Trustees has determined that it is necessary, advisable and in the public interest that the tracts of land described on Exhibit A be annexed to the Village;

NOW, THEREFORE, BE IT ORDAINED by the President and Board of Trustees of the Village of Bellevue, in the County of Peoria and State of Illinois:

Section 1: That the tracts of land described on the attached Exhibit A be and the same are hereby annexed to and made a part of the Village of Bellevue, in the County of Peoria and the State of Illinois.

Section 2: That the Village Clerk shall file for record in the office of the Recorder of Deeds of Peoria County, Illinois and in the office of the Clerk of Peoria County, Illinois a certified copy of this Ordinance along with a map of the above-described tracts of land.

Section 3: This Ordinance shall be in full force and effect from and after its passage, approval and recordation as provided by law.

PASSED AND APPROVED THIS 26TH DAY OF OCTOBER, 1992.

5 AYES

VILLAGE OF BELLEVUE, ILLINOIS

0 NAYS

(Corporate Seal)

Larry N. Howard, President

Attest:

Carol S. Howard, Village Clerk



CLARK ENGINEERS MW, INC.

LEGAL DESCRIPTION

ALL OF LOT 4, THAT PART OF LOT 1, AND THAT PART OF THE SOUTH 100.3 FEET OF EVEN WIDTH OF LOT 2, WHICH IS NORTH OF THE NORTH RIGHT-OF-WAY LINE OF ILLINOIS ROUTE 116 (S.B.I. ROUTE 8) PLANK ROAD, IN HANNAH SZOLD SUBDIVISION, BEING A PART OF THE EAST HALF OF THE SOUTHWEST QUARTER OF SECTION 12, TOWNSHIP-8-NORTH, RANGE-7-EAST OF THE 4TH PRINCIPAL MERIDIAN, PEORIA COUNTY, ILLINOIS.

PIN: 17-12-378-010  
17-12-378-012

*Consulting Engineers*

3425 North Dries Lane Peoria, Illinois 61604 Ph: 309/685-8464 FAX: 309/685-2535

ELECTRICAL

- CIVIL

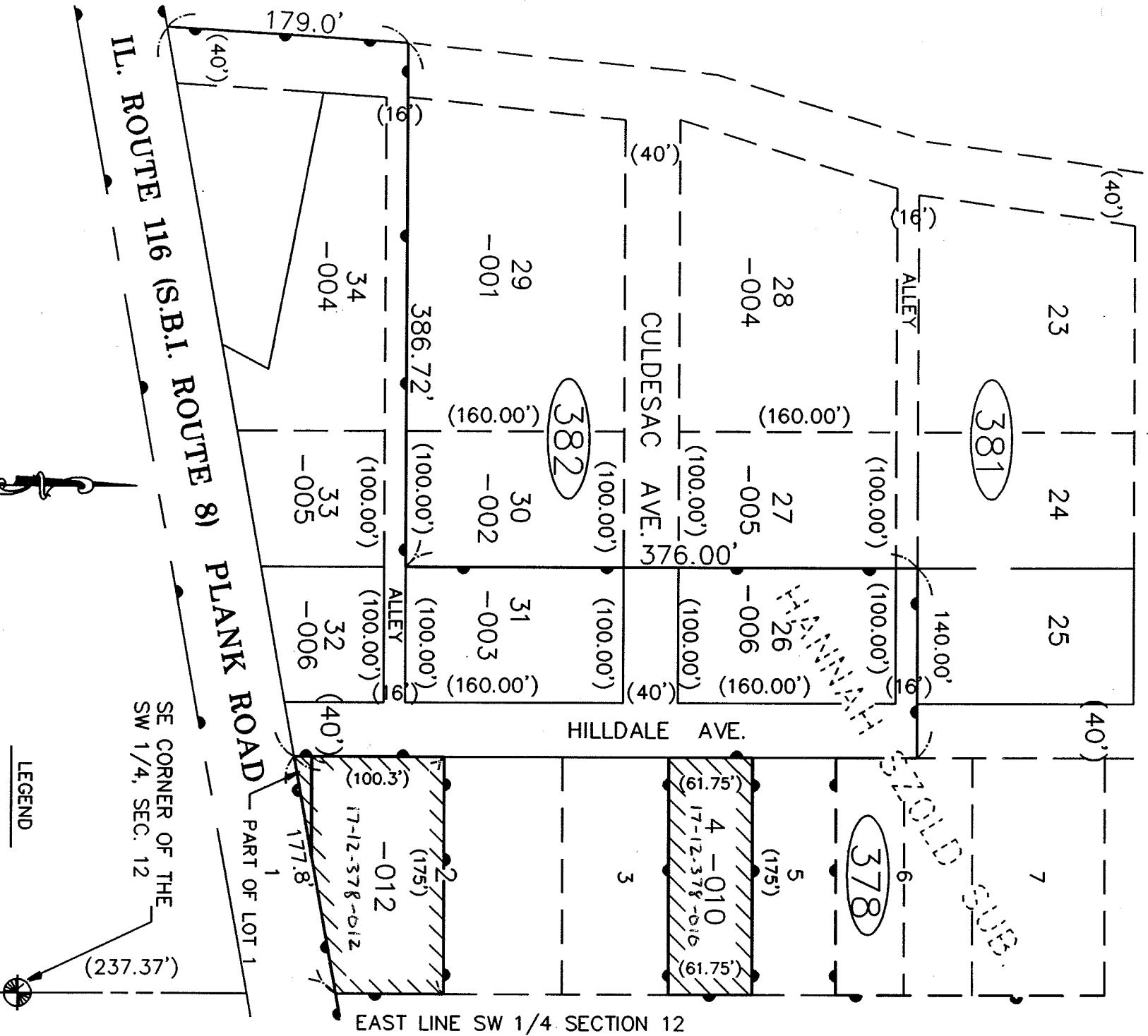
- MECHANICAL

- STRUCTURAL

- SURVEYING

- ENVIRONMENTAL

PLAT OF ANNEXATION TO THE VILLAGE OF BELLEVUE  
 BEING A PART OF THE EAST HALF, OF THE SOUTHWEST QUARTER OF SECTION 12,  
 TOWNSHIP 8 NORTH, RANGE 7 EAST OF THE 4TH PRINCIPAL MERIDIAN,  
 PEORIA COUNTY, ILLINOIS.



STATE OF ILLINOIS )  
 COUNTY OF PEORIA ) SS

SCALE: 1"=100'

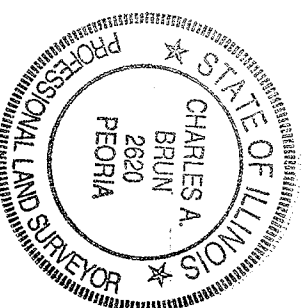
////// = AREA OF ANNEXATION  
 ——— = EXISTING CORP. LIMIT  
 (100.00') = RECORD DISTANCE

LEGEND

WE, CLARK ENGINEERS MW, INC., DO HEREBY CERTIFY THAT WE HAVE PREPARED  
 AN ANNEXATION PLAT OF PART OF THE E 1/2, SW 1/4 SECTION 12, T.8 N., R.7 E.  
 OF THE 4TH PRINCIPAL MERIDIAN, PEORIA COUNTY, ILLINOIS AND THAT THE ABOVE  
 PLAT IS A TRUE AND CORRECT REPRESENTATION OF SAID ANNEXATION AS DRAWN  
 TO A SCALE OF 1 INCH EQUALS 100 FEET.

DATED THIS 9th DAY OF OCTOBER, 1992.

CLARK ENGINEERS MW INC.  
 BY *Charles A. Brun*  
 CHARLES A. BRUN IPLS # 2620



CLARK ENGINEERS MW, INC.  
 3425 North Dries Lane  
 Peoria, Illinois 61604  
 Ph(309)685-8464

DESIGNED BY	JOB NO. 5618-00M
DRAWN BY MWM	DATE 10-7-92