

ORDINANCE NO. 382

AN ORDINANCE PROVIDING FOR ANNEXATION OF CERTAIN TERRITORY
TO THE VILLAGE OF BELLEVUE, ILLINOIS

WHEREAS, the tract of land described on Exhibit A attached hereto and made a part hereof is contiguous to the Village of Bellevue, is not within the corporate limits of any municipality and is owned by the Village of Bellevue; and

WHEREAS, pursuant to Section 7-1-9 of the Illinois Municipal Code (65 ILCS 5/7-1-9), contiguous, uninhabited unincorporated territory owned by a municipality may be annexed by the municipality which owns the territory; and

WHEREAS, the Village Board of Trustees has determined that it is necessary, advisable and in the public interest that the tract of land described on Exhibit A be annexed to the Village;

NOW, THEREFORE, BE IT ORDAINED by the President and Board of Trustees of the Village of Bellevue, in the County of Peoria and State of Illinois:

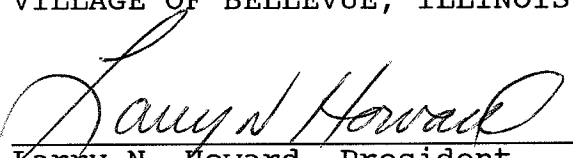
Section 1: That the tract of land described on the attached Exhibit A be and the same is hereby annexed to and made a part of the Village of Bellevue, in the County of Peoria and the State of Illinois.

Section 2: That the Village Clerk shall file for record in the office of the Recorder of Deeds of Peoria County, Illinois and in the office of the Clerk of Peoria County, Illinois a certified copy of this Ordinance along with a map of the above-described tract of land.

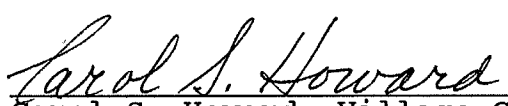
Section 3: This Ordinance shall be in full force and effect from and after its passage, approval and recordation as provided by law.

PASSED AND APPROVED THIS 8TH DAY OF FEBRUARY, 1993.

5 AYES
0 NAYS

VILLAGE OF BELLEVUE, ILLINOIS

Larry N. Howard, President

(Corporate Seal)

Attest:

Carol S. Howard, Village Clerk



CLARK ENGINEERS MW, INC.

LEGAL DESCRIPTION

ALL OF LOT 35 AND THAT PART OF COAL STREET THAT LIES WEST OF LOT 29, CULDESAC AVENUE, LOT 28, A 16' ALLEY, LOT 23, AND TRAP AVENUE, ALL BEING IN HANNAH SZOLD SUBDIVISION OF THE EAST HALF OF THE SOUTHWEST QUARTER OF SECTION 12, TOWNSHIP 8 NORTH, RANGE 7 EAST OF THE 4TH PRINCIPAL MERIDIAN, PEORIA COUNTY, ILLINOIS.

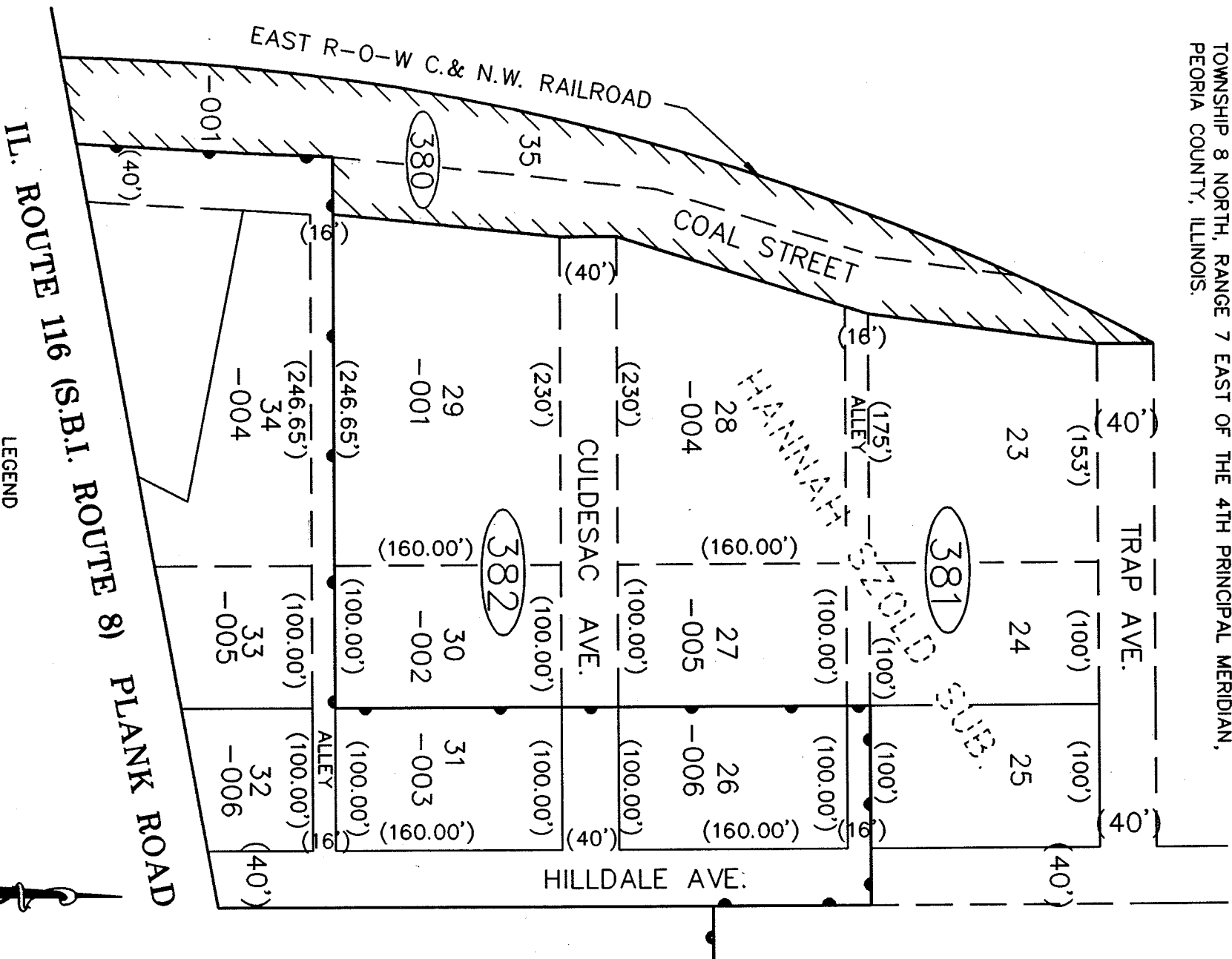
PIN: 17-12-380 -001

Consulting Engineers

3425 North Dries Lane Peoria, Illinois 61604 Ph: 309/685-8464 FAX: 309/685-2535

ELECTRICAL - CIVIL - MECHANICAL - STRUCTURAL - SURVEYING - ENVIRONMENTAL

PLAT OF ANNEXATION TO THE VILLAGE OF BELLEVUE
 BEING A PART OF THE EAST HALF, OF THE SOUTHWEST QUARTER OF SECTION 12,
 TOWNSHIP 8 NORTH, RANGE 7 EAST OF THE 4TH PRINCIPAL MERIDIAN,
 PEORIA COUNTY, ILLINOIS.



PLAN: 17-12-380-001
 STATE OF ILLINOIS)
 COUNTY OF PEORIA) SS

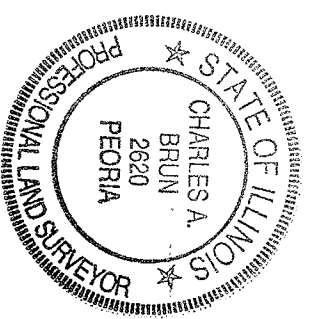
////// = AREA OF ANNEXATION
 ———— = EXISTING CORP. LIMIT
 (100.00') = RECORD DISTANCE

SCALE: 1"=100'

WE, CLARK ENGINEERS MW, INC., DO HEREBY CERTIFY THAT WE HAVE PREPARED
 AN ANNEXATION PLAT OF PART OF THE E 1/2, SW 1/4 SECTION 12, T.8 N., R.7 E.
 OF THE 4TH PRINCIPAL MERIDIAN, PEORIA COUNTY, ILLINOIS AND THAT THE ABOVE
 PLAT IS A TRUE AND CORRECT REPRESENTATION OF SAID ANNEXATION AS DRAWN
 TO A SCALE OF 1 INCH EQUALS 100 FEET.

DATED THIS 9th DAY OF OCTOBER, 1992

CLARK ENGINEERS MW INC.
 BY Charles A. Brun
 CHARLES A. BRUN IPLS # 2620



CLARK ENGINEERS MW, INC.
 3425 North Dries Lane
 Peoria, Illinois 61604
 Ph(309)685-8464

DESIGNED BY	JOB NO.
DRAWN BY	DATE
MWM	5618-00M
	10-7-92